



# 1600 MODEL ASH HEARTH

## Floor Protector Construction (Hearth)

For minimum Floor protector dimensions refer to following data. The floor protector must extend at least 300mm beyond the door opening of the heater and 200mm to each side of the door opening. (Floor protector specification (AS/NZS2918: 2001) minimum floor protector only eg. Ceramic tile glued to a heat sensitive floor.) A provision has been made at the base of the rear legs for seismic restraint by bolting through the two holes through the hearth and floor.

## Clearance Requirements

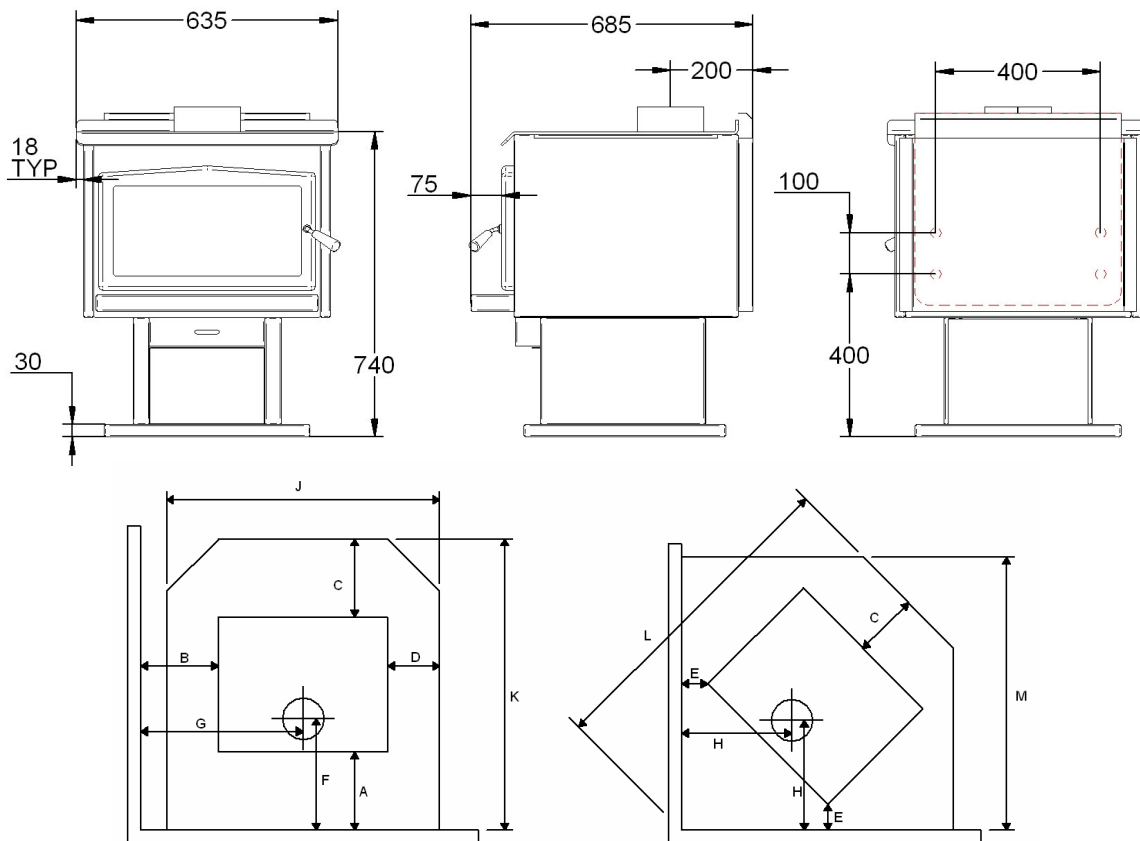
The Osburn Ash Hearth has been tested to the Australian/New Zealand Standard AS/NZS 2918:2001 and all installations must be in accordance with the minimum clearances to combustibles indicated in these instructions.

The minimum clearances to combustibles may be reduced if the combustible walls are shielded with an approved non-combustible material. Details of suitable shielding materials and appropriate clearance reduction factors are present in Section 3 of AS/NZS 2918:2001.

Minimum clearances to combustibles in millimetres AS/NZS 2918:2001

NEW ZEALAND	A	B	C	D	E	F	G	H	J	K	L	M
With Logaire double flue shield	100	360	300	82	150	300	678	515	800	1000	1430	1140

\* Note : All specifications are subject to change or variation without notification.

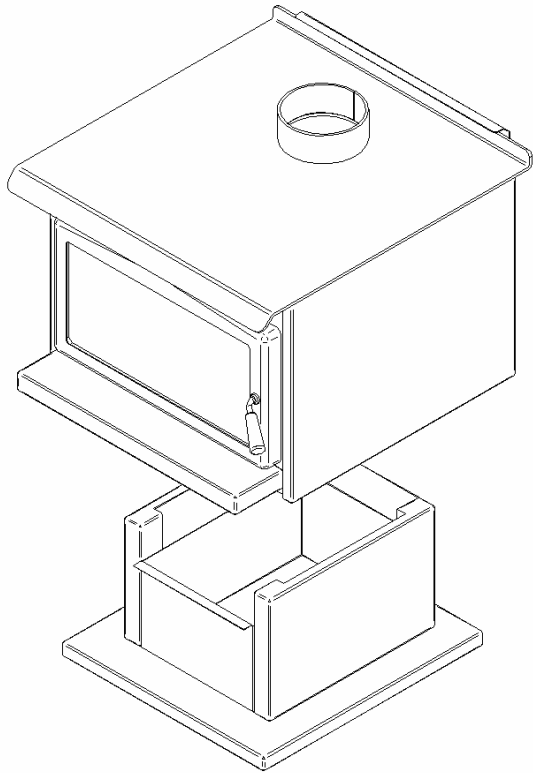


## GLENDIMPLEX AUSTRALASIA LTD

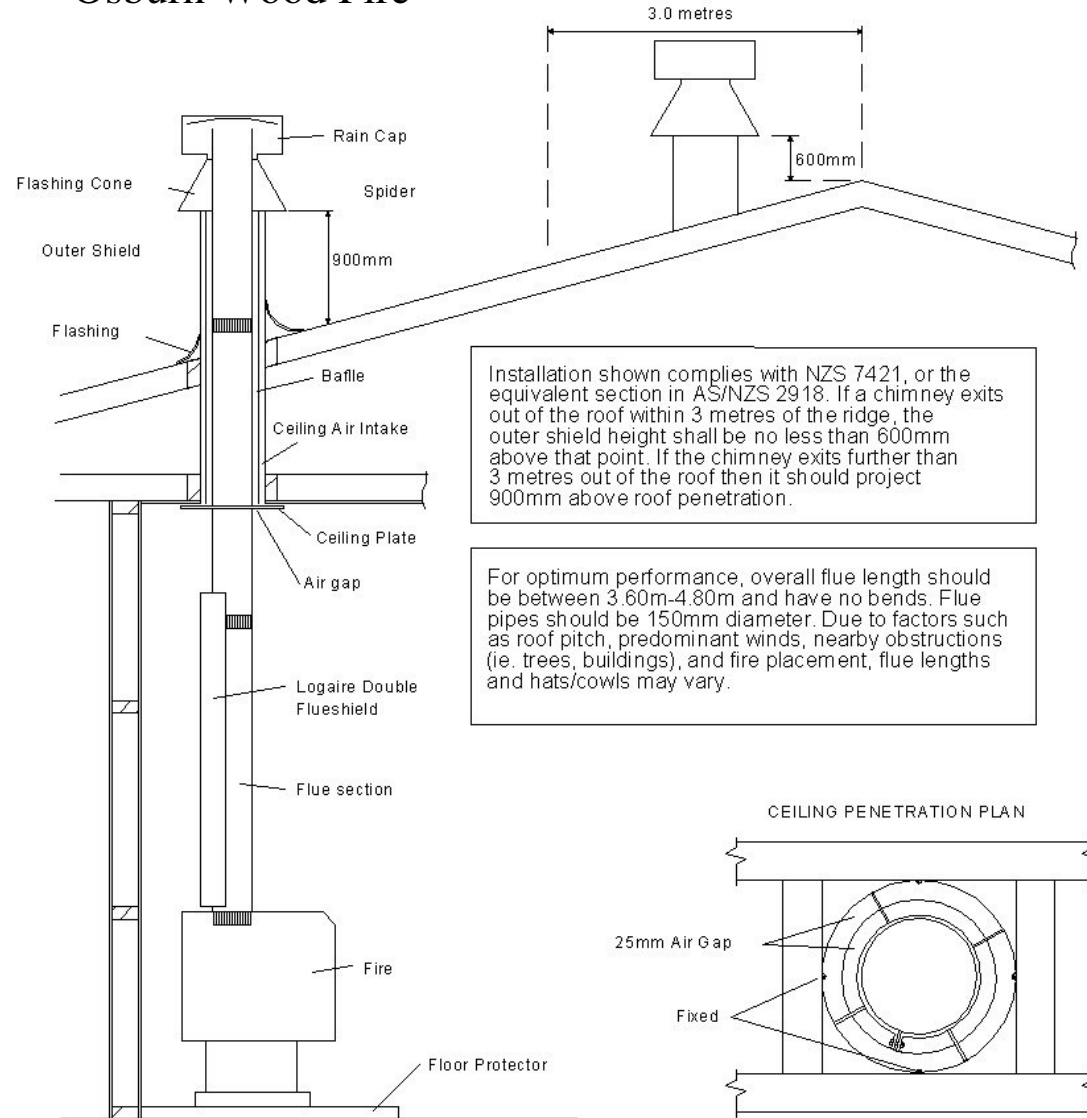
38 Harris Road , East Tamaki \* PO Box 58-473, Greenmount \* Auckland, New Zealand  
Ph: (09) 2748 2565 \* Fax: (09) 274 8472 \* Email: sales@glendimplex.co.nz

# Assembly of the 1600 Ash Hearth

## Osburn Wood Fire



- 1 Lower the fire onto the assembled pedestal unit.
- 2 Line up the pedestal box holes with the threaded holes in the hearth legs and secure fire to pedestal unit.
- 3 Place assembled fire into position and seismic restrain to the floor.
- 4 Place the Ash Drawer into the pedestal box front opening.



### GLEN DIMPLEX AUSTRALASIA LTD

38 Harris Road , East Tamaki \* PO Box 58-473, Greenmount \* Auckland, New Zealand  
 Ph: (09) 2748 2565 \* Fax: (09) 274 8472 \* Email: sales@glendimplex.co.nz

OSF00738\_REV\_B.doc 21/05/2008